



8-Day

Round-Trip from Houston
\$2,849
per person

Mexico Pilgrimage

with Fr. Orrin Halepeska, Holy Rosary Church, Rosenberg

September 9 - 16, 2024

Tour Coordinator: Nora Puglia

Phone: (217) 793-3733

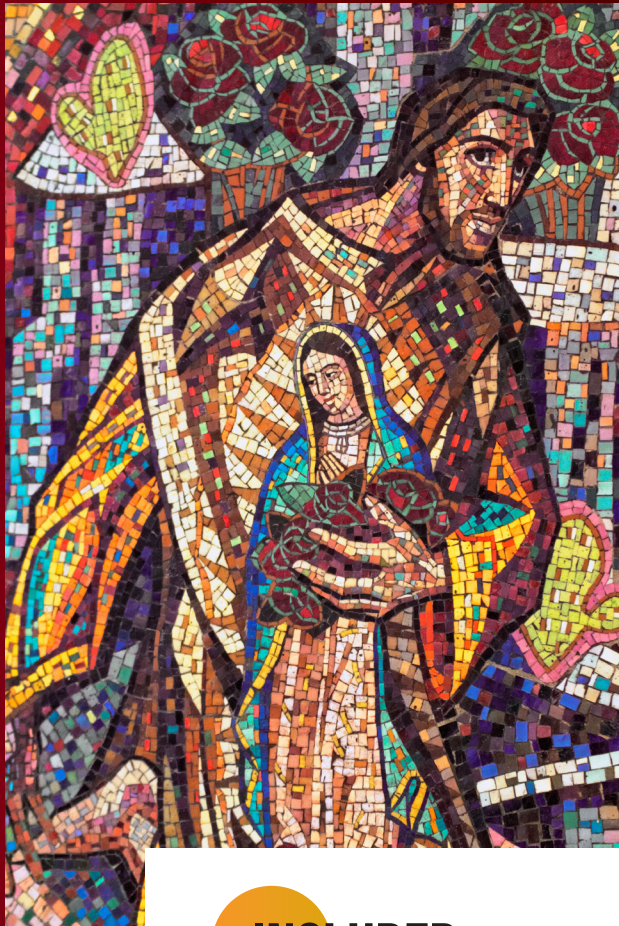
Email: tourwithpi@gmail.com

Register Online: <https://app.nativitypilgrimage.com/trip/?trip=43562>





Nativity Pilgrimage



Daily Itinerary

DAY 1: ARRIVE IN MEXICO CITY

Your pilgrimage begins today by boarding your flight to Mexico City. Upon arrival, we will board our bus for a city tour. Afterward, we will drive to the hotel for dinner and overnight accommodations.

DAY 2: TEOTIHUACÁN – SHRINE OF GUADALUPE – THREE CULTURES.

After breakfast, we will drive to Teotihuacan, one of the most powerful cultural centers in Mesoamerica, a prominent political and religious center with complexes of monumental buildings such as the Citadel and the Temple of the Feathered Serpent, the Calzada de los Muertos and the Pyramids of the Sun and the Moon. Then we will continue to the Shrine of our Lady Guadalupe, Patroness of the Americas. The Shrine has become one of the most important pilgrimage sites for Catholics, and its history dates back to 1531 when a devout, poor Indian man named Juan Diego (an Aztec convert to Christianity) received a vision of the Virgin Mary on Tepeyac Hill near what is now Mexico City. After private mass in one of the Shrine's chapels on site, we will have time to explore the grounds and to kneel in front of the centuries-old Tilma, where Our Lady's image was miraculously printed. Dinner and overnight accommodations will be at your hotel.

DAY 3: HISTORICAL CENTRE

This morning we will start with the visit of the Three Cultures Square, so called because of the different stages of Mexican History that can be clearly appreciated there: an Aztec ruin, the Church of Santiago Tlatelolco with the baptismal font of Juan Diego, modern skyscrapers and a housing unit. We will continue to the Historical Centre, Mass at the Cathedral with the Chapel of the Poisoned Cross. After lunch, we will visit Garibaldi and Mariachi Square with the Tequila Museum and Tequila tasting. Dinner and overnight accommodations will be at your hotel.

INCLUDED

- Round-trip airfare
- All airport taxes & fuel surcharges
- First-class hotels (Price based on double occupancy)
- Land Transportation as per itinerary
- Breakfast and dinner daily
- Sightseeing and admissions fees as per itinerary
- Daily Masses
- Professional local guides
- Medical travel protection plan

NOT INCLUDED

- Trip cancellation insurance is not included (strongly recommended)
- Nativity Pilgrimage offers trip insurance through **Trawick International** at an additional cost
- Tips for tour guides and drivers
- Passport & visa costs
- Items of a personal nature (hotel extras, laundry, phone calls, etc.)
- Items not specifically mentioned above

REGISTRATION

- A non-refundable, non-transferable deposit of \$300 is due at registration with your registration form & copy of your passport.
- Names on registration form and passport MUST match exactly & U.S. Passports must be valid for at least six months after the return date.
- We are not responsible for Visa procurement.
- Your final payment is due **May 31, 2024 (100 days before departure)**



September 9 - 16, 2024

DAY 4: MEXICO CITY- TAXCO – PUEBLA

Today: We depart to the beautiful mining silver town of Taxco. We can shop for silver items, jewelry, and art. We will spend the day walking around the beautiful city, praying at the impressive Church of Santa Prisca, where we will have our private Mass. Late afternoon we will drive to Puebla. Dinner and overnight accommodations will be at your hotel.

DAY 5: CHOLULA – PUEBLA- CHURCH OF SANTO DOMINGO – CATHEDRAL - SANTA MONICA MUSEUM

We begin by celebrating Mass at Holy Rosary Chapel at Santo Domingo Church. Next, we will go to Cholula and visit the Sanctuary of the Virgin of the Remedies on top of an Aztec Pyramid. We will also visit the Churches of Acatepec and Tonanzintla. Afterward, we will have lunch. This afternoon, we will visit the Cathedral, the Santa Monica Museum of Religious Art, and St. Francis of Assisi Church, where we will view the uncorrupted body of Blessed Sebastian de Aparicio, a famous local figure through whose intercessory prayers many miracles have been reported. Dinner and overnight accommodations will be at your hotel.

DAY 6: TLAXCALA - SAN MIGUEL DEL MILAGRO – OCOTLAN - MONASTERY OF SAN FRANCISCO

We move towards the State of Tlaxcala to visit the Shrine of San Miguel del Milagro. Here, St. Michael the Archangel appeared to Diego Lazaro de San Francisco in 1631 and told him of the

miraculous spring. We will celebrate Mass at the Shrine of Our Lady of Ocotlán, popularly known as Mexico's Lourdes. Next, we will visit the historical centre of Tlaxcala with the Cathedral of Our Lady of the Assumption (former Franciscan Convent) and the Regional Museum next door. We will have time for shopping or visiting a local textile factory. Dinner and overnight accommodations will be at your hotel.

DAY 7: XOCHIMILCO - COYOACAN

We will visit the floating gardens of Xochimilco, the canals are quite small, but we will enjoy it by taking a ride in a Trajinera and enjoying the Mexican folklore that will soon delight your senses. After the ride, we will continue to Coyoacán, have a typical lunch, and in the afternoon, we will visit The Frida Kahlo House Museum, also known as the Blue House, one of the area's most visited museums. Today, the building houses and exhibits a collection of diverse pieces that have belonged to the Kahlo family since 1904. Four years after the painter's death, in July 1958, it opened its doors to the public as a house museum. Return to the Hotel. Tonight, we will have a folkloric dinner at a local restaurant. Overnight accommodations will be at your hotel.

DAY 8: RETURN TO THE USA

We will transfer to the airport this morning to board our return flight home.



 (832) 406-7050

 info@nativitypilgrimage.com

 www.nativitypilgrimage.com

Contact Nativity Pilgrimage



TERMS & CONDITIONS

Your Package Includes

Air Transportation: Economy class and round-trip airfares are based on the time of the reservation. Rates and times are subject to change without notice. Airfares, once issued, are non-refundable, non-transferable, and cannot be used towards future travel.

Land Transportation: All land transportation as described in the itinerary will be by Deluxe Motor Coach. Some may be equipped with Wi-Fi service.

Hotels: Your hotels will be first-class with double occupancy (2 people per room with a private bath). Neither Nativity Pilgrimage nor the trip coordinator are responsible for providing a roommate.

Single Room: There is an additional cost per person as specified on the registration form. Single rooms are limited and will be awarded on a first-come, first-served basis.

Meal Plan: The meal plan offers two (2) meals per day: Breakfast & Dinner.

Baggage: Nativity Pilgrimage limits all passengers to one (1) piece of checked luggage and one (1) carry-on. All passengers should check with the airlines carriers for up to date baggage weight and dimensions.

Airport Fees: Airport Taxes, portorage, fuel surcharges and security fees.

Medical Protection Plan is provided during the trip.

Your Package Does Not Include

Cancellation Protection Plan: We highly recommend purchasing travel insurance upon registration.

Passport Expenses: Passports or any additional documents that may be required. Passports must be valid 6 months after your return date.

Personal Items: Laundry, other beverages (wines, liquors, mineral water, tea, coffee, etc.) and food that are not on the menus of your included meal package, and any additional luggage.

Non-itinerary fees: Any sightseeing fees, other services, or personal items that are not specifically mentioned as being included in your itinerary.

Lunch: You are responsible for lunch or any other meals not specified in your itinerary.

Tips for your tour guide & driver: The recommended amounts of tips per person are \$7.00 – \$9.00 per day for guides, \$5.00 – \$7.00 per day for drivers, \$1.00 – \$2.00 per day for hotels, and \$1.00 – \$2.00 per day for restaurants.

General Travel Information

Group Air: Group air differs from individually purchased airline tickets in that it is subject to the terms and conditions of the airlines. For this reason, we need to receive your registration and full payment by the payment deadline. After that date, registrations may be subject to a different rate, ticketing method, or airline. Additional fees and charges may apply. Group air flights are confirmed 60 – 90 days prior to departure.

Departure Cities: If your departure city is not listed on the brochure, indicate which airport you would like to depart from on the registration form. We will provide you with the best possible price and flight schedule in order to connect with the group. Additional fees and charges may apply.

Land-Only Option: If you would like to book your own air travel, indicate on your registration form that you want the "Land Only" option. By booking your own air, you may select your seat, airline, and travel schedule, use airline miles/points, provide airline reward program information, and make any special requests directly with the airline. No changes can be made after the final payment deadline. Land-only services begin and end at the hotels unless you are able to meet the group at the airport. Land-only travelers are responsible for their own airport transfers.

Important Nativity Pilgrimage Policies

The airline selects seat assignments for group air. We do not. Seat upgrades are available for registered travelers, by request. Quoted rates for an upgrade are subject to change until payment is received. Some upgrades are not available until the group tickets are issued.

Seat Upgrades: Once Nativity Pilgrimage receives an upgrade request, we will contact the airlines to finalize your request. We cannot guarantee the acceptance of this request, as it is subject to availability and pricing (which changes daily).

Seat Location Requests: Once Nativity Pilgrimage receives a seat location request, we will contact the airlines to finalize your request. We cannot guarantee acceptance of this request, as it is subject to availability and pricing (which changes daily).

Other Special Requests: Once Nativity Pilgrimage receives a special request, such as a wheelchair, food, etc., we will contact the airlines to finalize your request. We cannot guarantee acceptance of this request as it is subject to availability and pricing (which changes daily).

Booking Conditions

Deposit: A non-refundable deposit of \$300.00 per person is required at the time of booking. No reservation will be processed without a deposit.

Payment Deadline: Full payment is due May 31, 2024 (100 days before departure). Registrations received after the deadline require an additional \$100 (subject to availability). If payment is not made in full 50 days prior to departure, your payments are non-refundable.

You may use any major credit card to pay your deposit online. There is an additional 3% fee for each credit card transaction. We also accept checks, money orders, Zelle payments, and ACH transactions.

Late Payment Policy

Customers will receive late fees if they are not paid in full:

100 days – 61 days prior to departure.....\$150

60 days – 30 days prior to departure.....\$300

30 days – day before departure.....Subject to cancellation

Customers are also responsible for any difference in fare due to late payment (subject to availability). Refusal to pay will be considered a cancellation.

Cancellation/Refund Policy

We hope that nothing will prevent you from taking your pilgrimage with Nativity Pilgrimage. However, should you need to cancel your trip, your cancellation must be in writing via email or letter. It will be effective on the date of receipt. The following cancellation fees will apply:

Days Prior to Departure

Charge

100 + Days

99–50 Days

49 Days

Lose Deposit

50% of trip cost

100% of trip cost

Insurance premiums are non-refundable. We highly recommend purchasing travel insurance to avoid these cancellation fees.

Protect Your Trip



Follow the link or scan the QR code to view our Travel Protection Plan details.

[HTTPS://NATIVITY.PILGRIMAGE.COM](https://nativitypilgrimage.com)

Responsibility

Nativity Pilgrimage, Inc. and their agents assume no liability or responsibility in regards to travel in any form for any injuries or loss of property, accidents, delays, changes in schedule or itinerary, incidental damages or any irregular circumstances. This would include, but not be limited to, default or omission by any third party providing services or facilities related to and/or included in the tour or any part thereof. The IATA carriers, steamship firms, and other transportation companies whose services are featured in these tours, are not to be held responsible or accountable for any act, omission, or event during the time the passengers are not on board their respective conveyance. The passage contract in use by these companies, when issued, shall constitute the sole contract between the companies, the purchaser of these tours and/or passengers, and Nativity Pilgrimage Inc. does not assume any liability or responsibility in connection therewith. They are not responsible for any losses or additional expenses due to delay or changes in air or other services, sickness, weather, strike, war, guarantees, or other causes. All such losses or expenses shall be borne by the passenger as tour rates provide for arrangements only for the time stated. The right is reserved to substitute hotels of similar quality to those specified in the itinerary. Nativity Pilgrimage reserves the right to cancel any tour prior to departure. Refund details vary upon each trip. No refund will be made for any used portion of the tour unless arrangements are made prior to departure from the United States. Prices and itineraries are subject to change without notice if booking conditions are not complied with.

